

Advanced Conveyors & Bulk Handling Systems

The SMART Conveyor™ Company

BE
&E



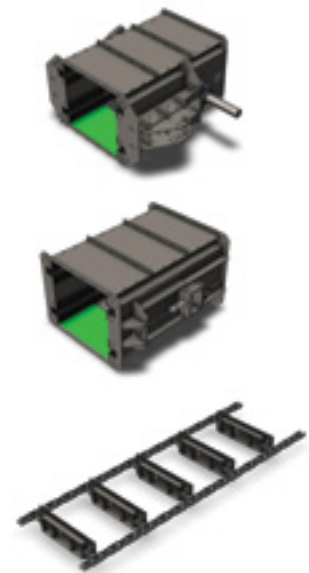
SMART Conveyors™

M Series

- **Chain:** C2160H
- **OA Height:** 35"
- **Widths:** 24"-60"
- **Sidewall thickness:** 0.25"
- **Bottom panel thickness:** 7g
- **Curve wear material:** AR steel
- **Sprockets:** Segmented, B-Hub
- **Takeup style:** Manual, threaded with spring indicator
- **Unique features:** Split head
- **Uses and limits:** M (Medium) Series conveyors are designed to handle materials at common workload capacities in heavy, continuous applications.

SUPERIOR DESIGN

- Paddles don't touch floors or sidewalls
- Chains run outside the material path
- Bolted construction
- Inclines up to vertical
- Replace sprockets and wear items without breaking the chain
- Requires only one structural support every 40'
- Enclosed design contains dust
- Meets NFPA standards for explosion hazards



BE
&E



www.BEandE.com



+1 317-522-0864



Info@Biomass-Equipment.com